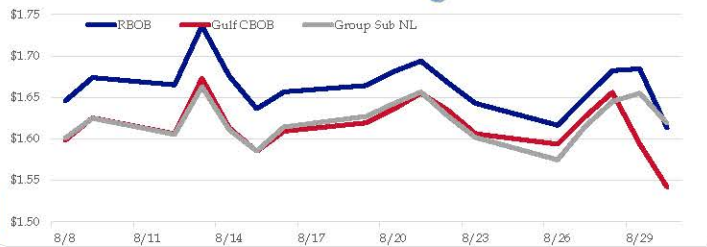


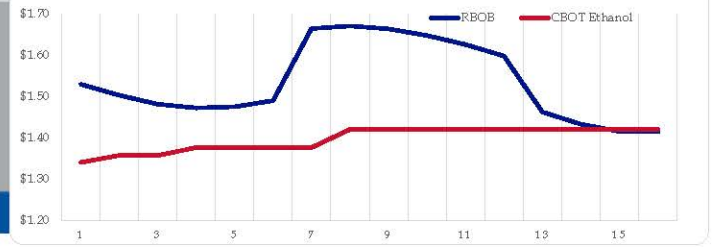
Gasoline

	RBOB	Change	Gulf CBOB	Change	Group Sub NL	Change	Gulf Basis	Group Basis	RBOB Technicals		
9/3	\$1.4583	-\$0.1551	\$1.3866	-\$0.0751	\$1.5444	-\$0.0746	\$ (0.0722)	\$ 0.0858	Indicator	Direction	Resistance
8/30	\$1.6134	-\$0.0713	\$1.5419	-\$0.0521	\$1.6190	-\$0.0363	\$ (0.0715)	\$ 0.0055	MACD	Bearish	2.0378 July High
8/29	\$1.6847	\$0.0023	\$1.5940	-\$0.0622	\$1.6552	\$0.0101	\$ (0.0907)	\$ (0.0295)	Stochastics	Neutral	1.5300 20-Day MA
8/28	\$1.6824	\$0.0325	\$1.6563	\$0.0297	\$1.6451	\$0.0305	\$ (0.0261)	\$ (0.0373)	RSI	Neutral	1.4609 Aug Low
8/27	\$1.6499	\$0.0334	\$1.6266	\$0.0329	\$1.6146	\$0.0399	\$ (0.0233)	\$ (0.0353)	ADX	Neutral	1.3749 Feb Low
8/26	\$1.6165	-\$0.0263	\$1.5937	-\$0.0125	\$1.5747	-\$0.0271	\$ (0.0228)	\$ (0.0418)	Momentum	Bearish	Support
8/23	\$1.6428	-\$0.0247	\$1.6062	-\$0.0282	\$1.6018	-\$0.0255	\$ (0.0367)	\$ (0.0411)	Bias:	Neutral	
8/22	\$1.6675	-\$0.0263	\$1.6344	-\$0.0208	\$1.6272	-\$0.0293	\$ (0.0332)	\$ (0.0403)			

Gasoline History



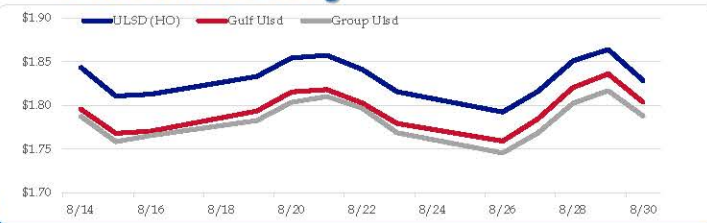
Gasoline Forward Curve



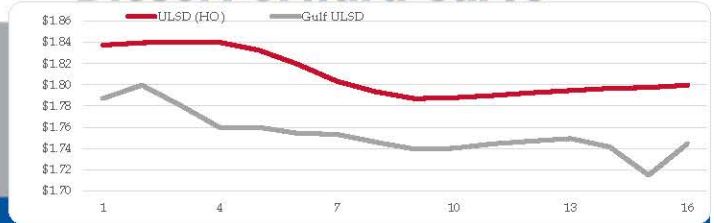
Diesel

	ULSD (HO)	Change	Gulf Ulstd	Change	Group Ulstd	Change	Gulf Basis	Group Basis	HO Technicals		
9/3	\$1.7783	-\$0.0499	\$1.7535	-\$0.0499	\$1.7368	-\$0.0509	\$ (0.0254)	\$ (0.0417)	Indicator	Direction	Resistance
8/30	\$1.8282	-\$0.0358	\$1.8034	-\$0.0427	\$1.7877	-\$0.0292	\$ (0.0249)	\$ (0.0405)	MACD	Bearish	2.1377 2019 High
8/29	\$1.8640	\$0.0130	\$1.8361	\$0.0156	\$1.8169	\$0.0144	\$ (0.0280)	\$ (0.0471)	Stochastics	Neutral	2.0181 July High
8/28	\$1.8510	\$0.0351	\$1.8205	\$0.0359	\$1.8025	\$0.0340	\$ (0.0305)	\$ (0.0485)	RSI	Neutral	1.7402 June Low
8/27	\$1.8159	\$0.0235	\$1.7847	\$0.0254	\$1.7685	\$0.0229	\$ (0.0313)	\$ (0.0474)	ADX	Bearish	1.6424 Jan Low
8/26	\$1.7924	-\$0.0232	\$1.7592	-\$0.0202	\$1.7456	-\$0.0230	\$ (0.0332)	\$ (0.0468)	Momentum	Bearish	Support
8/23	\$1.8156	-\$0.0257	\$1.7794	-\$0.0233	\$1.7686	-\$0.0282	\$ (0.0362)	\$ (0.0470)	Bias:	Bearish	
8/22	\$1.8413	-\$0.0160	\$1.8027	-\$0.0155	\$1.7968	-\$0.0133					

Diesel History



Diesel Forward Curve



Crude

	WTI	Change	Brent	Change	Vs WTI				Vs Brent				Group / WCS
9/3	\$53.13	-\$1.97	\$57.44	-\$1.22	Gulf Gas	Gulf Diesel	3/2/1	5/3/2	Gulf Gas	Gulf Diesel	3/2/1	5/3/2	3/2/1
8/30	\$55.10	-\$1.61	\$58.66	-\$1.77	\$9.66	\$20.64	\$13.32	\$14.05	\$6.10	\$17.08	\$9.76	\$10.49	23.11
8/29	\$56.71	\$0.93	\$60.43	-\$0.65	\$10.24	\$20.40	\$13.63	\$14.30	\$6.52	\$16.68	\$9.91	\$10.58	24.53
8/28	\$55.78	\$0.43	\$61.08	\$0.59	\$13.78	\$20.68	\$16.08	\$16.54	\$8.48	\$15.38	\$10.78	\$11.24	24.05
8/27	\$55.35	\$2.10	\$60.49	\$0.98	\$12.97	\$19.61	\$15.18	\$15.62	\$7.83	\$14.47	\$10.04	\$10.48	20.89
	Line 1	Change	Line 2	Change									
	CPL space	-0.0145	\$0.0070	-\$0.0160	-\$0.0003								

Refinery Margins

Economic Indicators

Commodity Futures

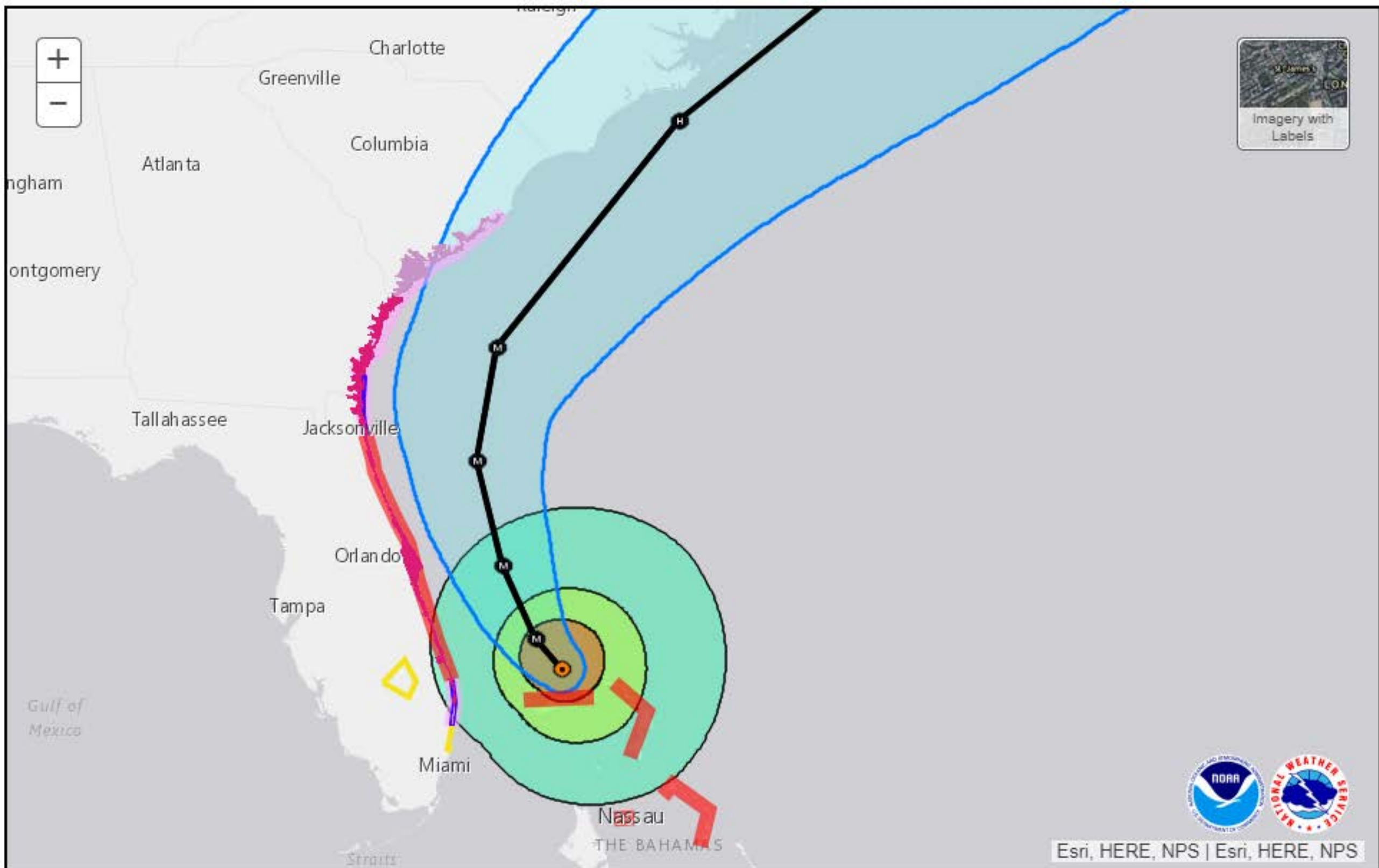
	Settle	Change		Settle	Change
S&P 500	2,925	-\$21.25	Ethanol	1.340	-\$0.005
DJIA	26,403	-\$93.94	NatGas	2.285	-\$0.011
			Gold	1,519	14.0
EUR/USD	1.0990	-\$0.0033	Silver	18.19	18.19
USD Index	98.86	-\$0.60	Copper	2.53	-\$0.050
US 10 YR YIELD	1.50%	0.00	FCCJ	100.50	-\$5.20
US 2 YR YIELD	1.50%	-\$0.03	Corn	358.00	-\$3.00
Oil Volatility Index	31.82	0.34	Soy	857.00	-\$6.50
S&P Volatility Index (VIX)	17.88	1.10	Wheat	451.25	-\$0.75
Nikkei 225 Index	20,665	-\$75.00	Ethanol RINs	0.1503	0.000
			Butane	0.515	-\$0.009
			Propane	0.415	-\$0.013

Diesel Forward Curve

Indicative forward prices for ULSD at Gulf Coast area origin points. Prices are estimates only.

Del. Month	Price	Differential	3 Mo. Avg	6 Mo. Avg
Sep-19	\$1.7996	-\$0.0385		
Oct-19	\$1.7803	-\$0.0585		
Nov-19	\$1.7598	-\$0.0785	\$1.7799	
Dec-19	\$1.7600	-\$0.0710		
Jan-20	\$1.7543	-\$0.0625		
Feb-20	\$1.7534	-\$0.0495	\$1.7559	\$1.7679
Mar-20	\$1.7460	-\$0.0450		
Apr-20	\$1.7395	-\$0.0460		
May-20	\$1.7404	-\$0.0460	\$1.7420	
Jun-20	\$1.7445	-\$0.0410		
Jul-20	\$1.7470	-\$0.0410		
Aug-20	\$1.7495	-\$0.0405	\$1.7470	\$1.7445
12 Month Avg	\$1.7562	-\$0.0515		

*SOURCES: Nymex, CBOT, NYSE, ICE, NASDAQ, CME Group, CBOE. Prices delayed.



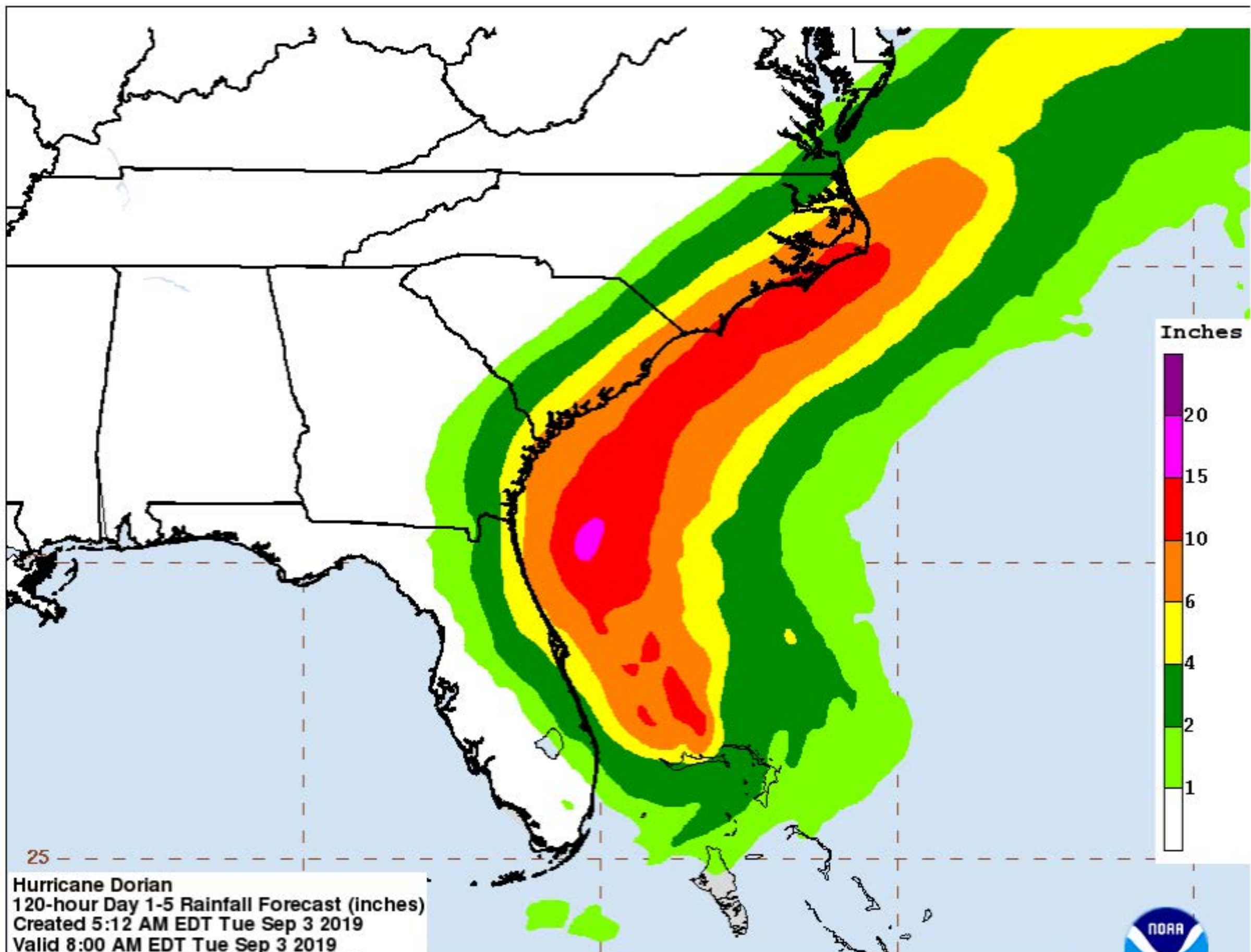
Mouse Lat/Lon: 25.1, -69.7

Legend

<ul style="list-style-type: none"> Current Center Location Forecast Center Locations: Tropical/Subtropical Cyclone Potential/Post-tropical Cyclone Forecast Sustained Winds: M > 110 mph H 74 - 100 mph S 39 - 73 mph D < 39 mph 	<p>Watches / Warnings:</p> <ul style="list-style-type: none"> Tropical Storm Watch Tropical Storm Warning Hurricane Watch Hurricane Warning Storm Surge Watch Storm Surge Warning 	<p>Initial Extent of Winds:</p> <ul style="list-style-type: none"> > 39 mph > 58 mph > 74 mph
<p> Potential track area</p>	<p>5-day chance of receiving sustained winds:</p> <p>5 10 20 30 40 50 60 70 80 90 100%</p>	<p>Past Track :</p> <ul style="list-style-type: none"> Potential / Post-tropical Tropical Depression Tropical Storm 1-5 Hurricane

[Download GIS Data](#)
[Past Track in KMZ](#)

U.S. Rainfall QPF (from WPC)

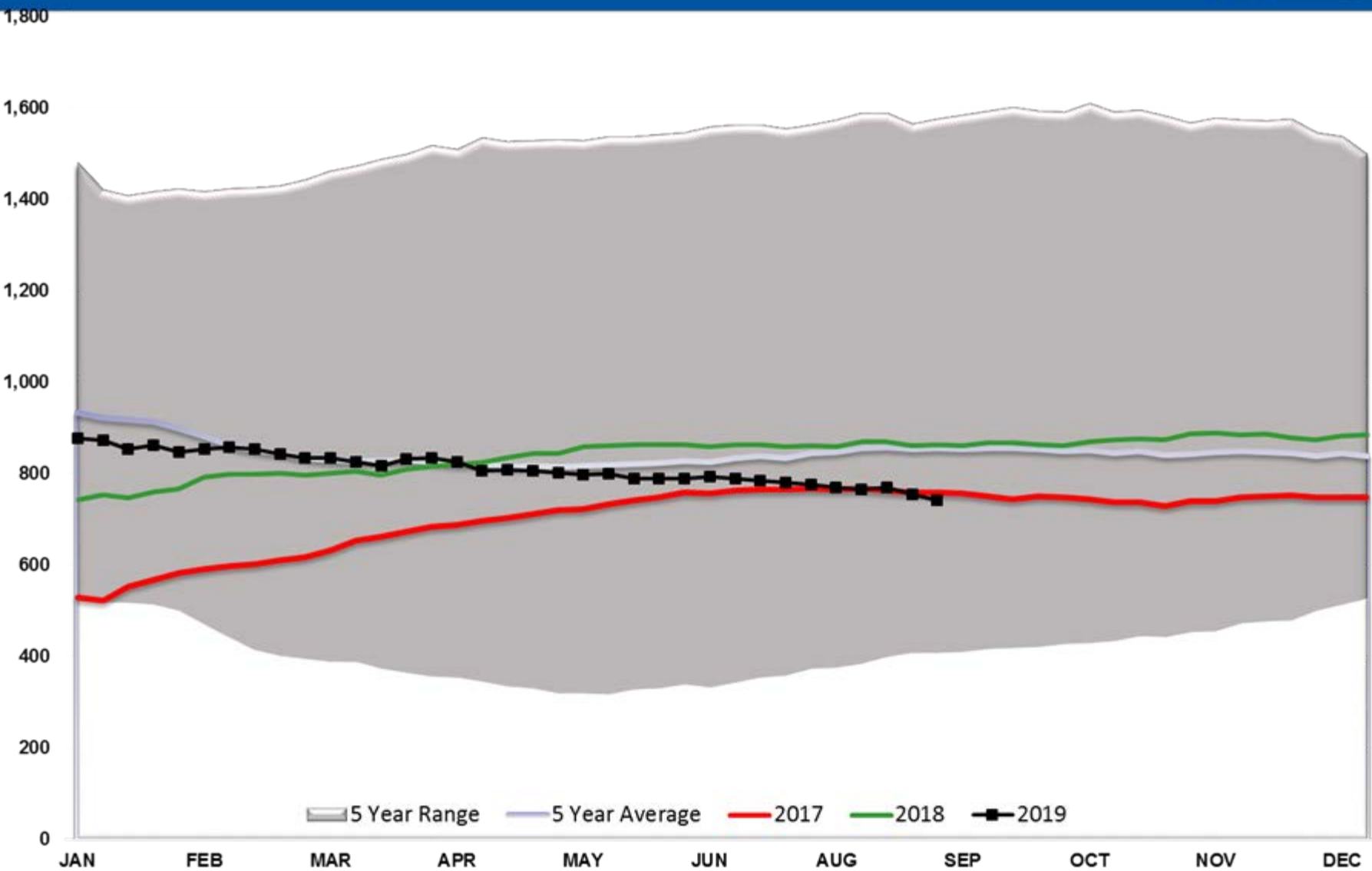


Hurricane Dorian
120-hour Day 1-5 Rainfall Forecast (inches)
Created 5:12 AM EDT Tue Sep 3 2019
Valid 8:00 AM EDT Tue Sep 3 2019
through 8:00 AM EDT Sun Sep 8 2019
NOAA/NWS/NCEP/WPC

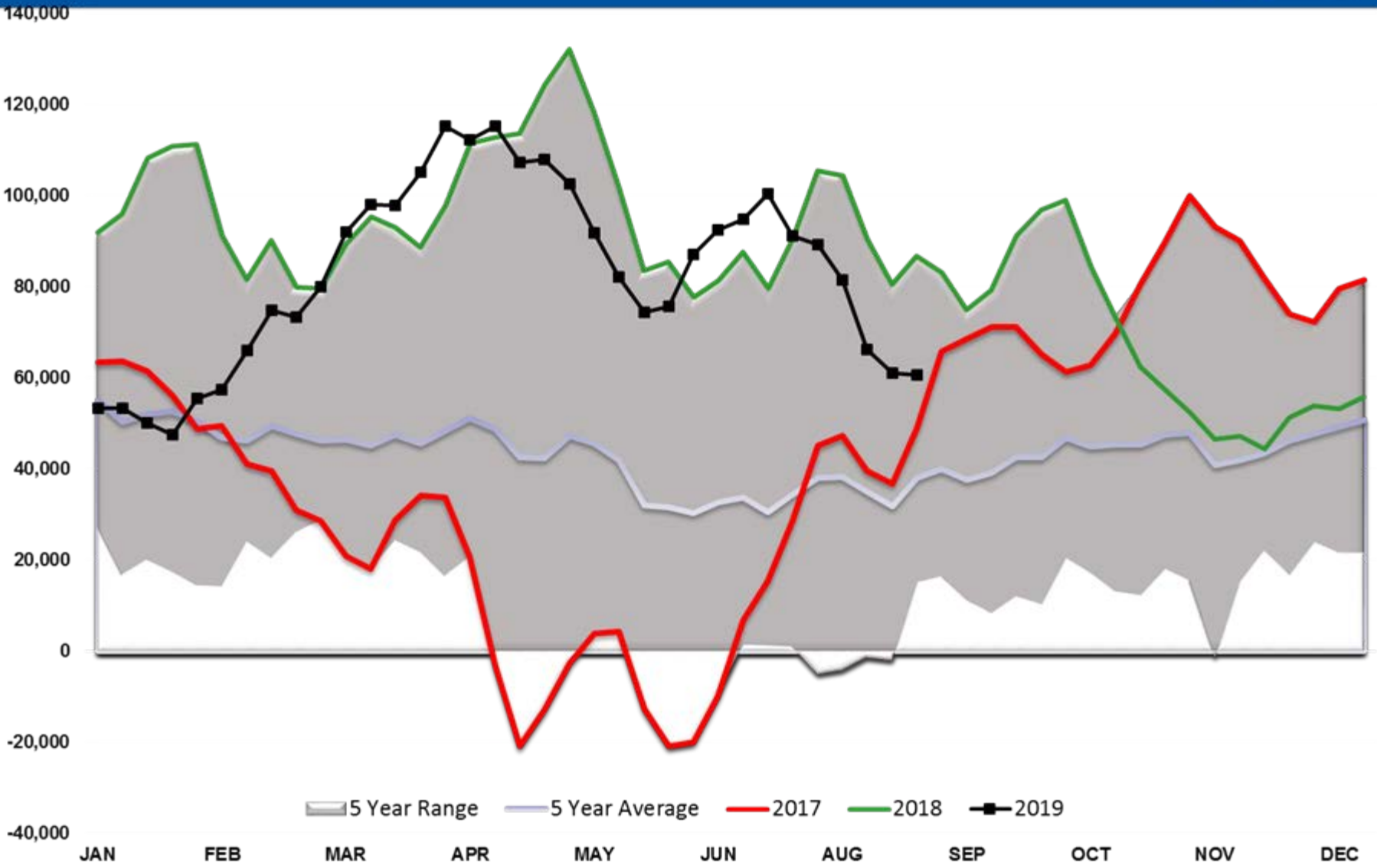
Local point maximum rainfall may be higher than shown.
See the NHC public advisories for the latest tropical cyclone information.



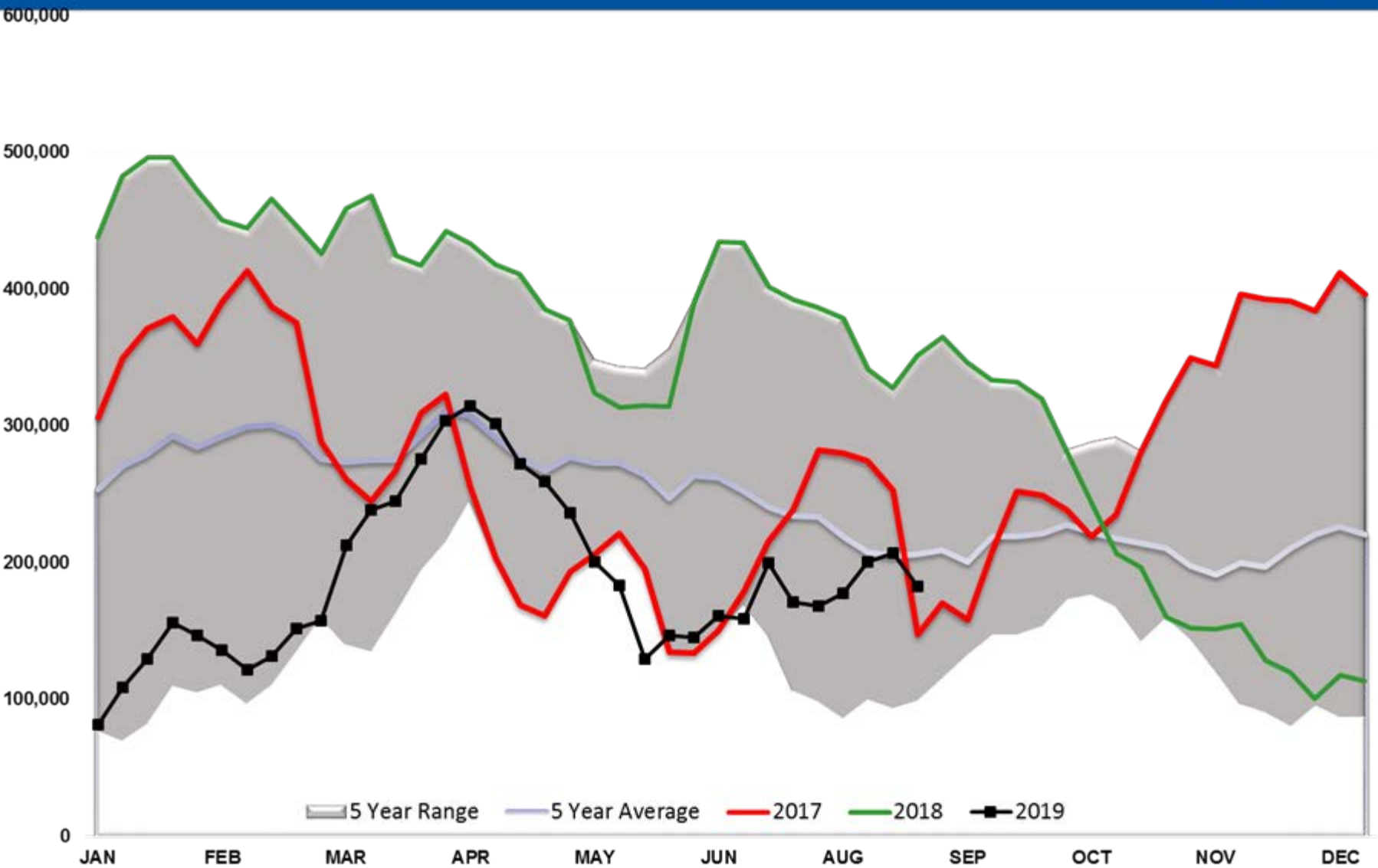
Baker Hughes - Total US Oil Rigs



RBOB Managed Net Position



WTI Managed Net Position



ULSD Managed Net Position

