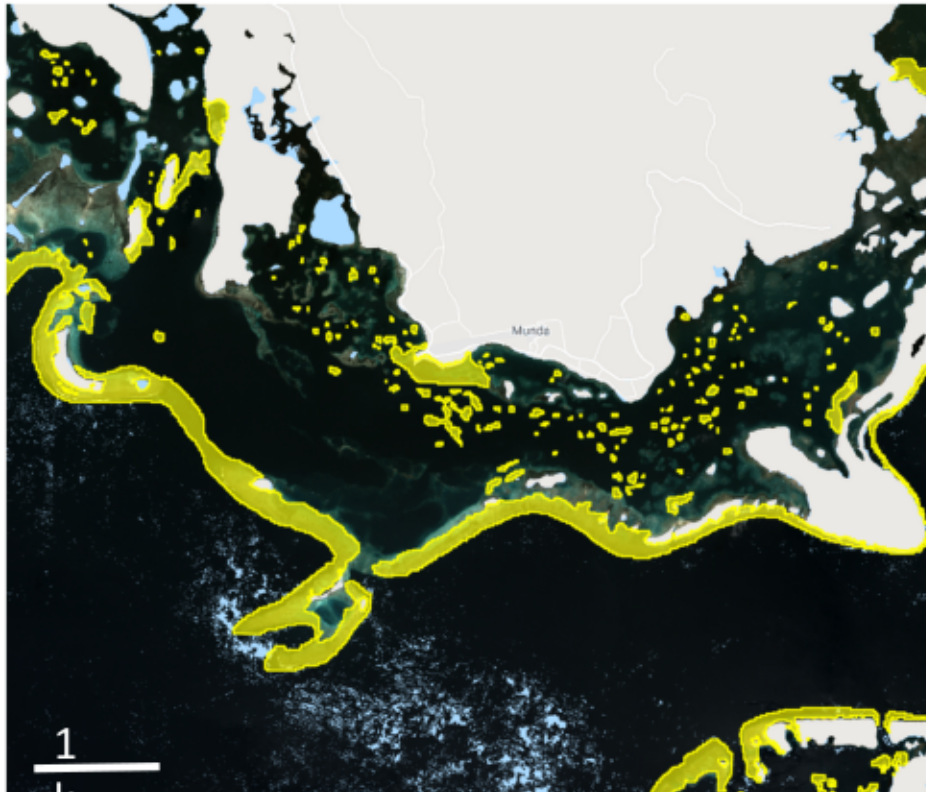


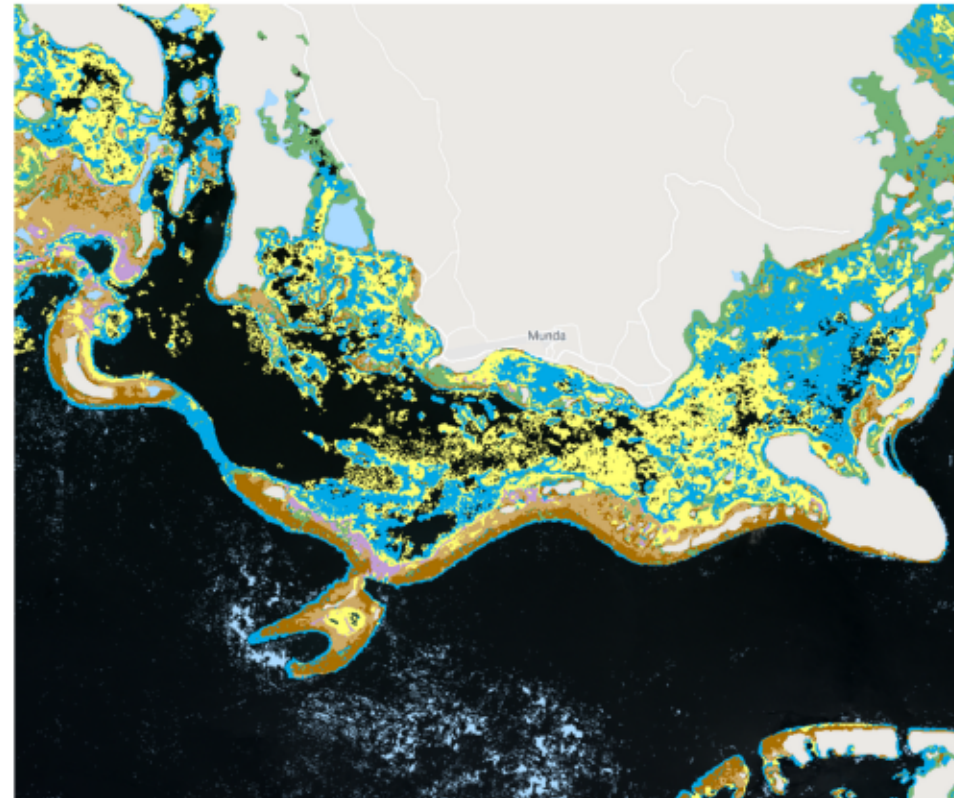
Differences between UNEP- WCMC's global coral reef maps and the Allen Coral Atlas

Thematic Difference

UNEP 2018 (reef outline no benthic)

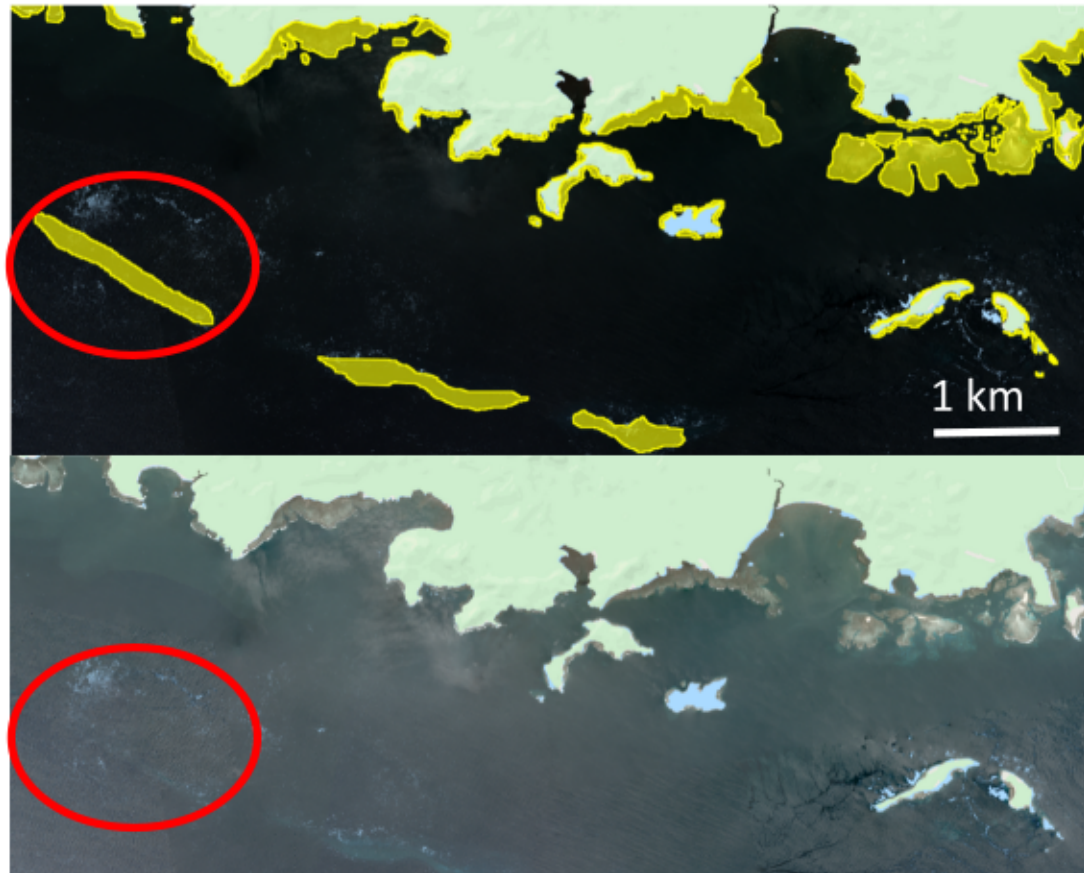


Atlas Benthic

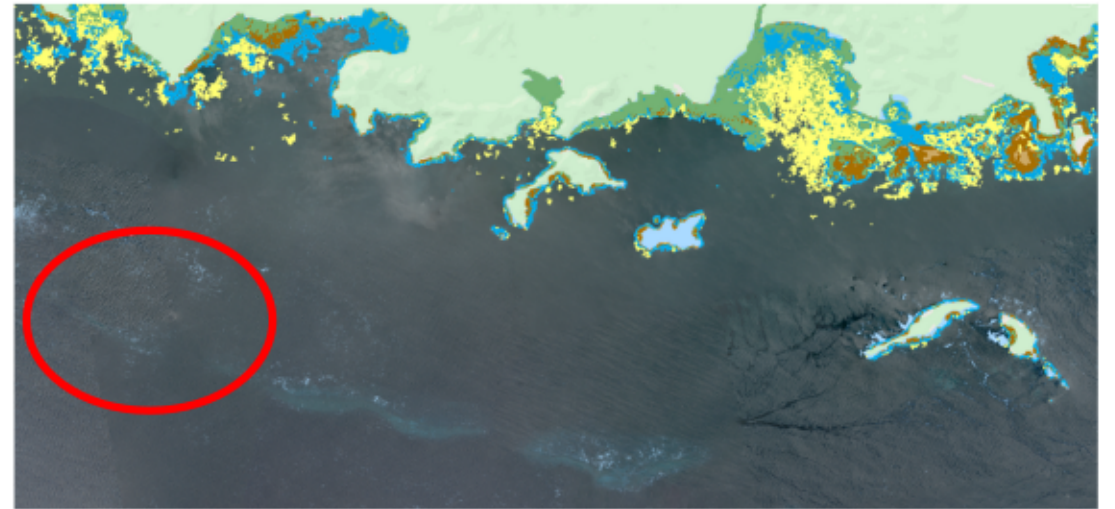


Missing Reefs in the Atlas, not visible to deep, potentially manually mapped in UNEP

UNEP 2018

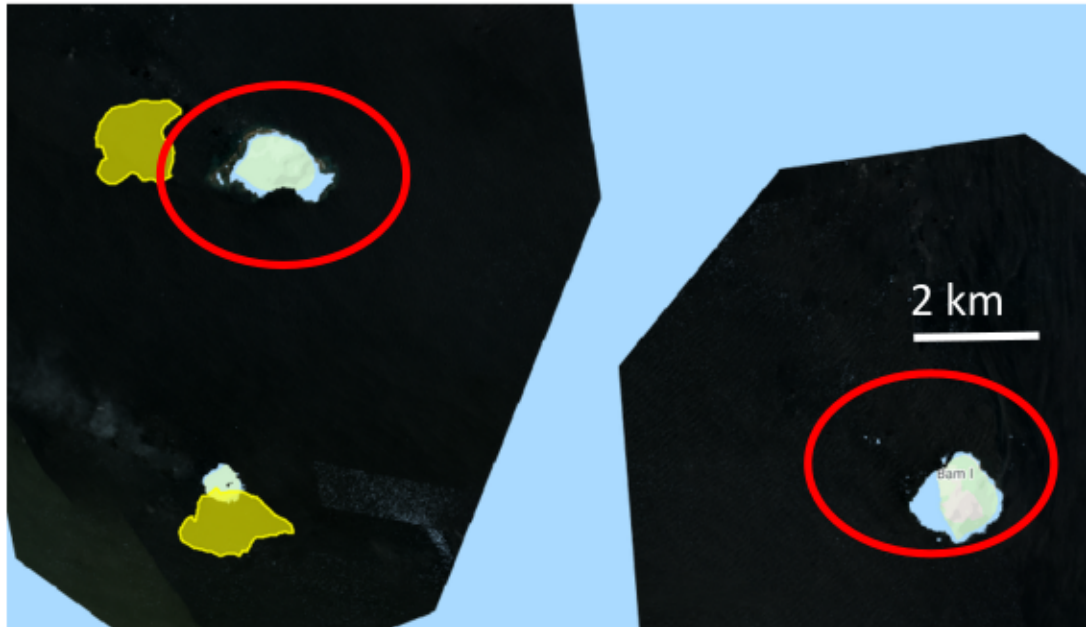


Atlas Benthic

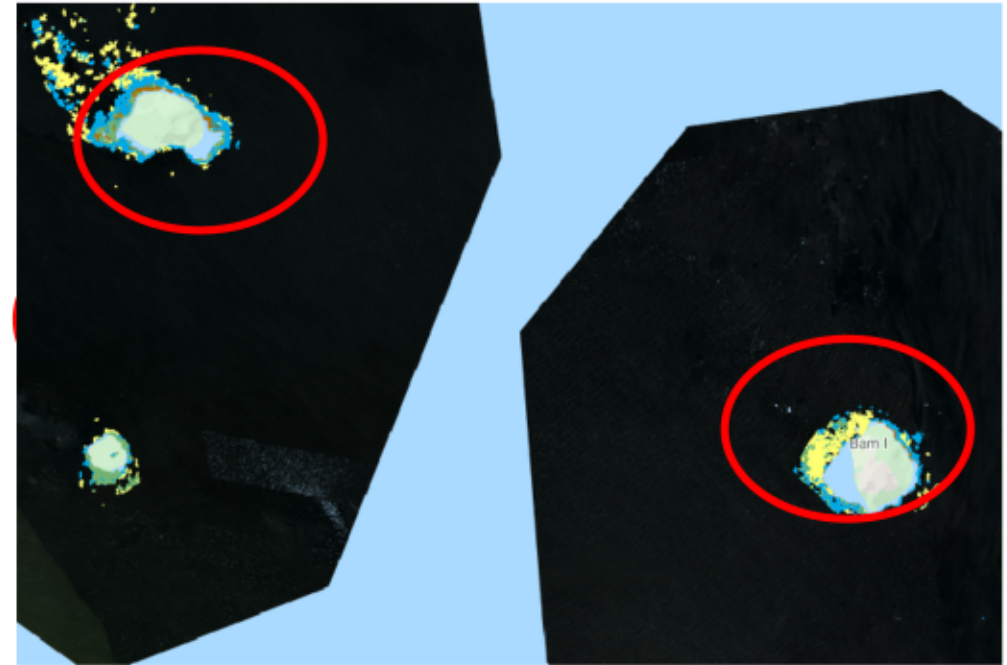


Missing Reefs in UNEP, unknown reason

UNEP 2018

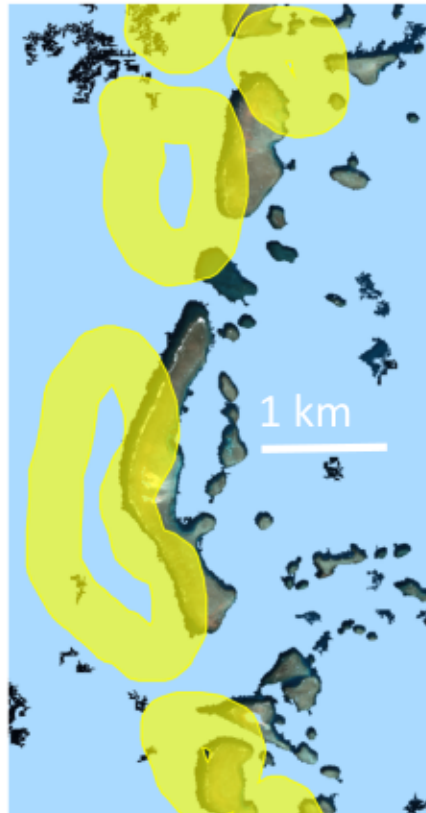


Atlas Benthic

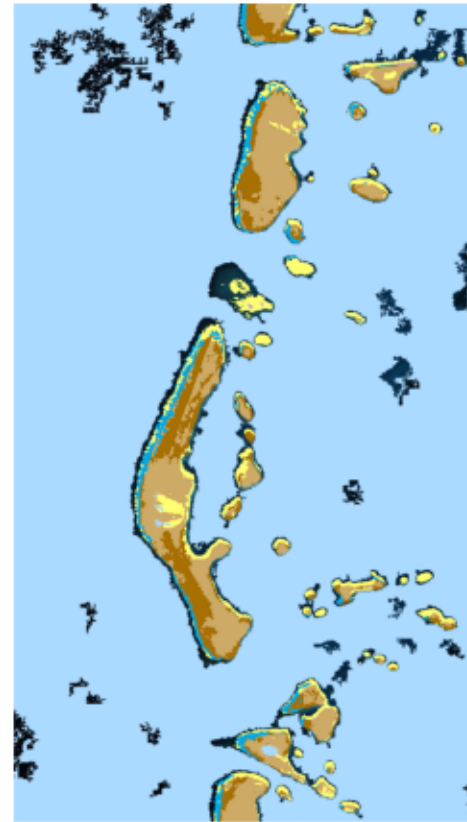


Georeferencing Error, misregistration of UNEP

UNEP 2018

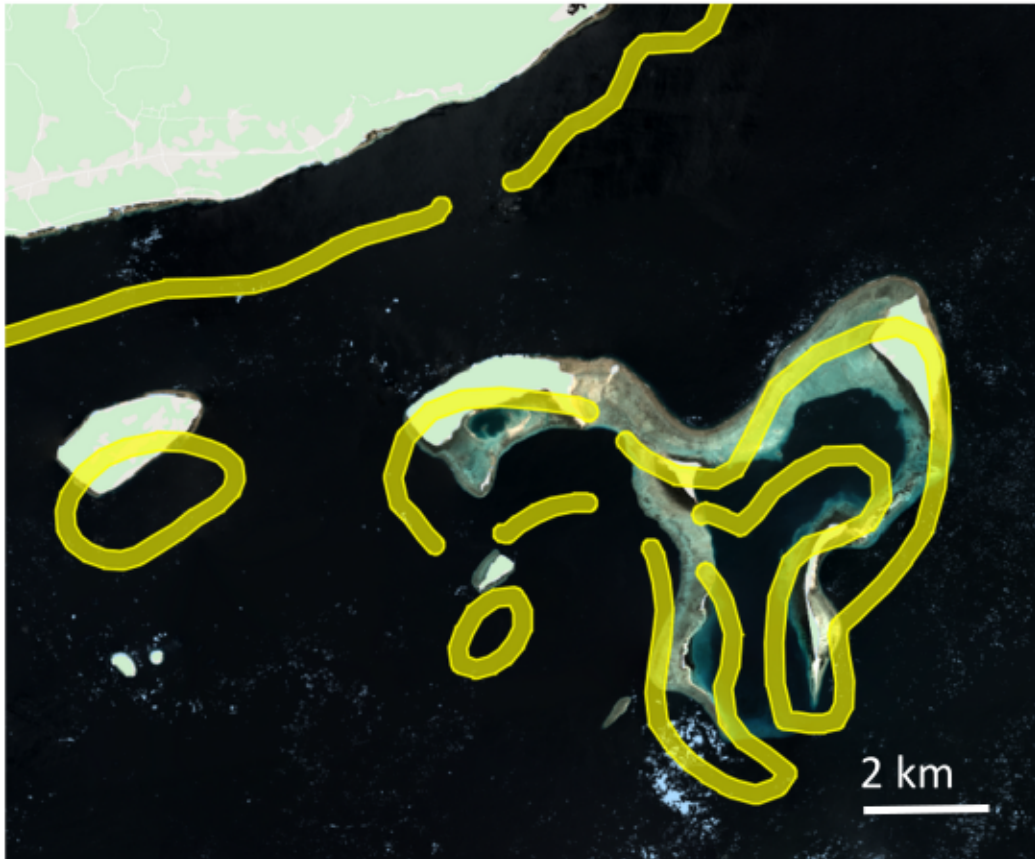


Atlas Benthic

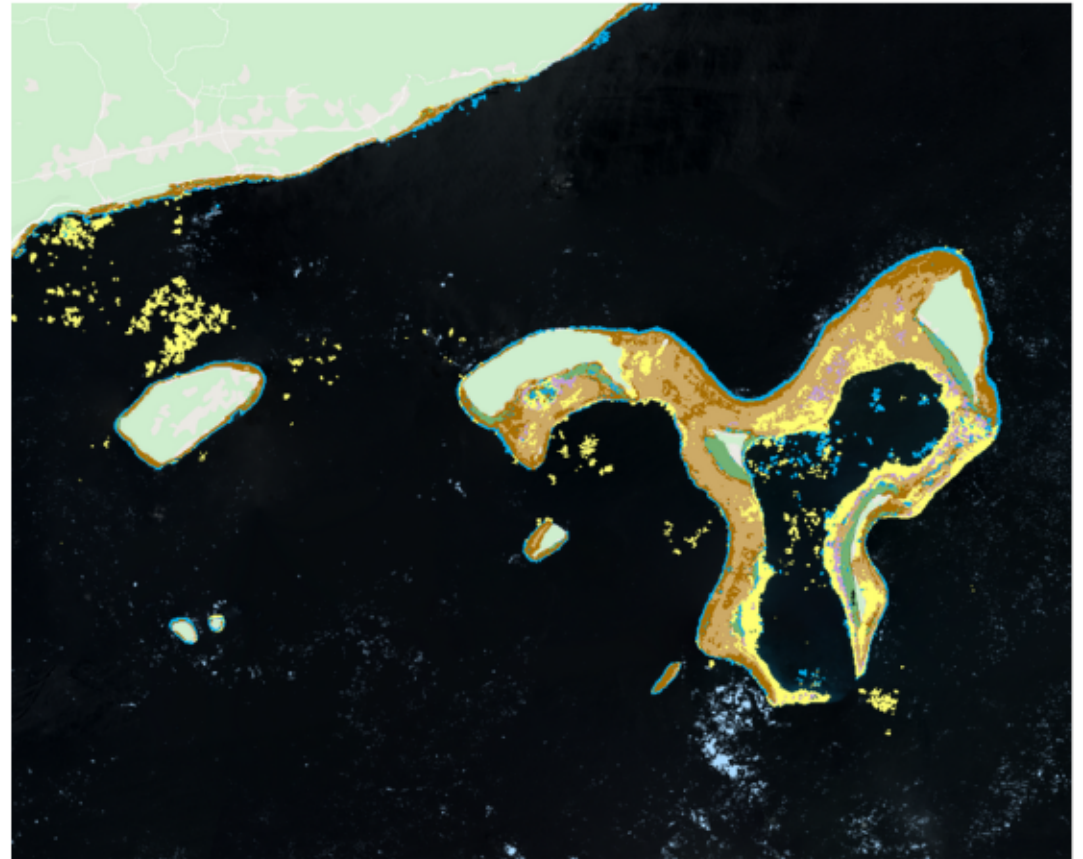


Abstract Reefs: UNEP Reefs outlines based on conceptualised drawing compared to image

UNEP 2018

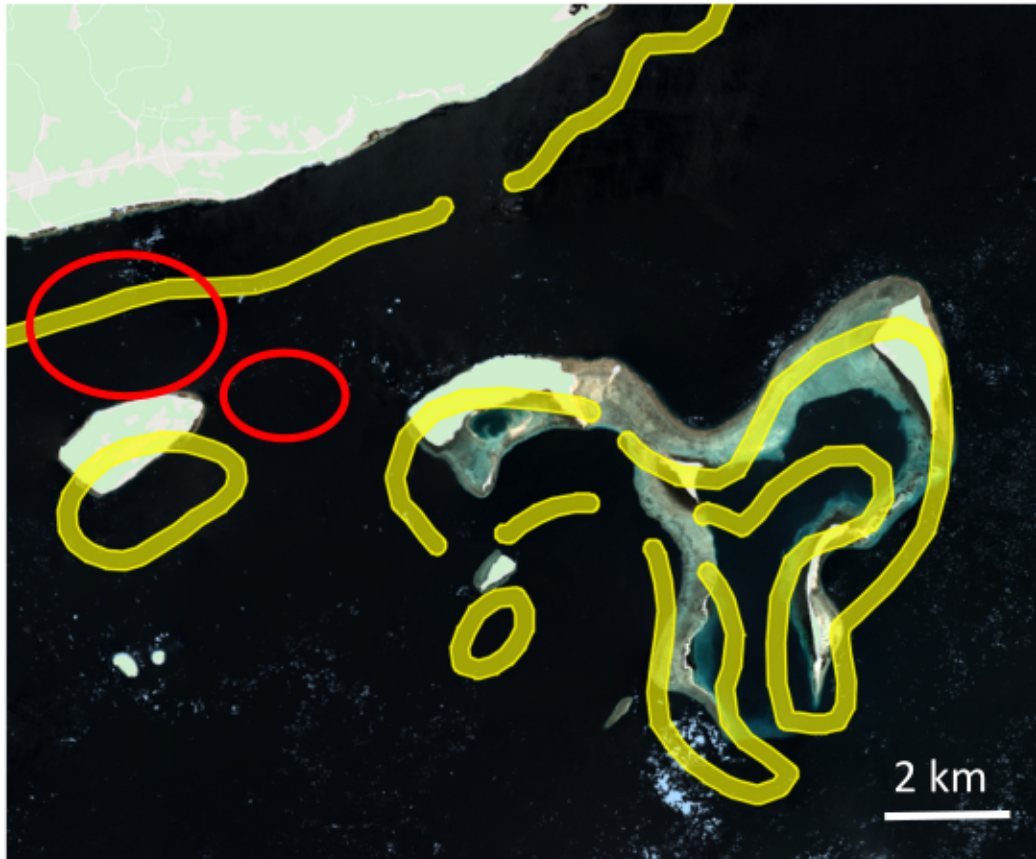


Atlas Benthic



Deep water as shallow reef class, semi automated Atlas mapping approach could not differentiate classes due to quality of imagery and depth

UNEP 2018

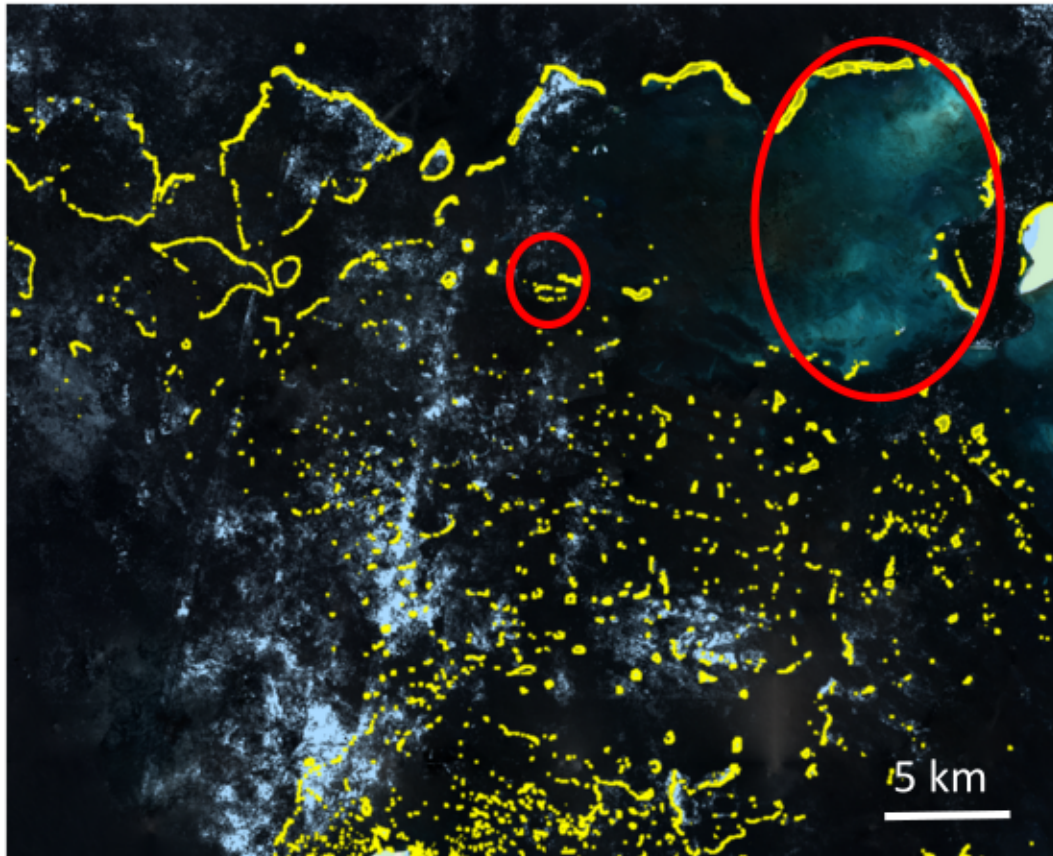


Atlas Benthic

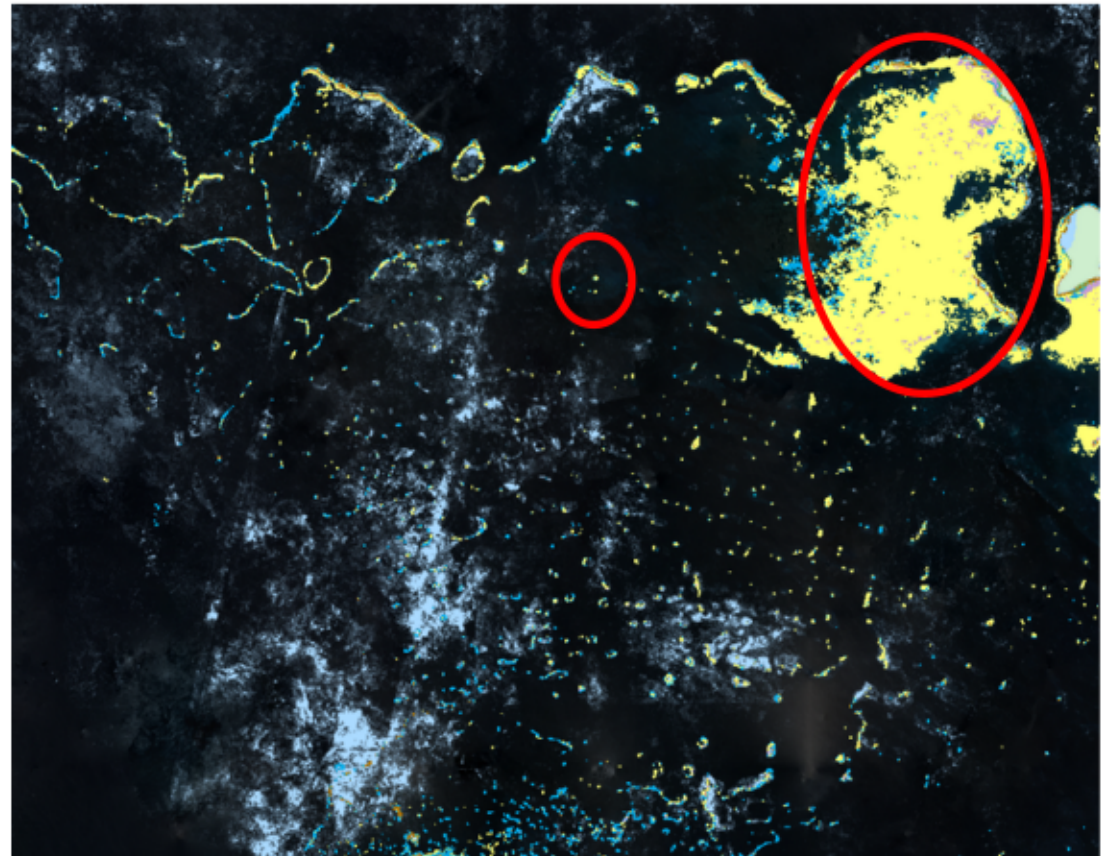


Reefs not mapped in UNEP or in the Atlas

UNEP 2018



Atlas Benthic



Turbid water reefs not mapped in Atlas, or water masked out creating straight lines

UNEP 2018



ACA Benthic

